



SUPPLEMENTARY MATERIAL

for the paper

Discovery of a Pleistocene megafaunal assemblage in a cave in Sierra de El Abra, San Luis Potosí, Mexico

by:

**Ramón Espinasa-Pereña, Sofía Espinasa-Diamant, Ruth Diamant,
H. Gregory McDonald, José Antonio Soriano, and Luis Espinasa**

Published in

Revista Mexicana de Ciencias Geológicas 41-3, diciembre 2024, p. 206–220

DOI: <http://dx.doi.org/10.22201/igc.20072902e.2024.3.1828>

COPYRIGHT

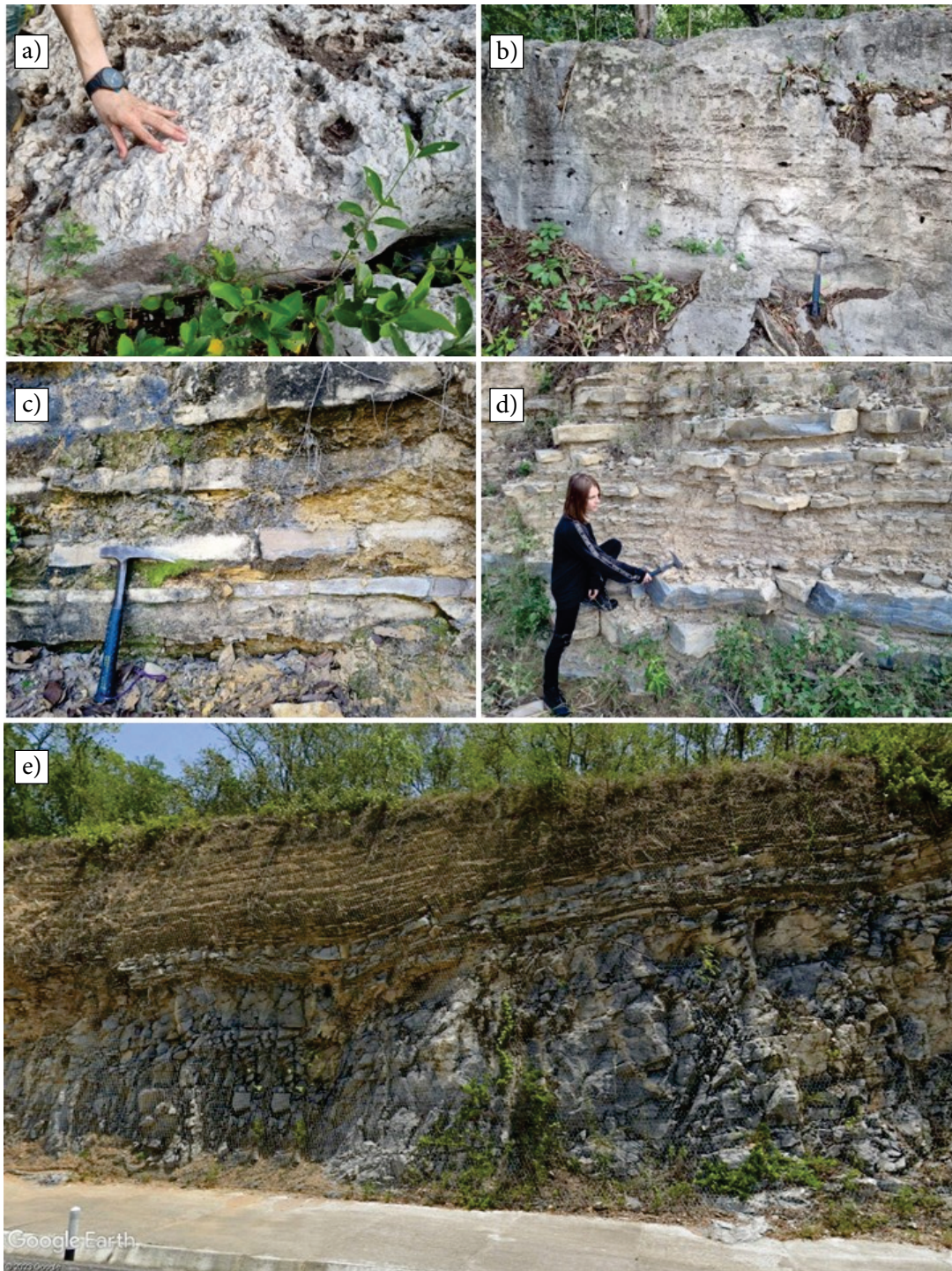
© 2024 The Author(s).

This is an open-access article published and distributed by the Universidad Nacional Autónoma de México under the terms of a [Creative Commons Attribution 4.0 International License \(CC BY\)](https://creativecommons.org/licenses/by/4.0/) which permits unrestricted use, distribution, and reproduction in any medium, provided the original author and source are credited.

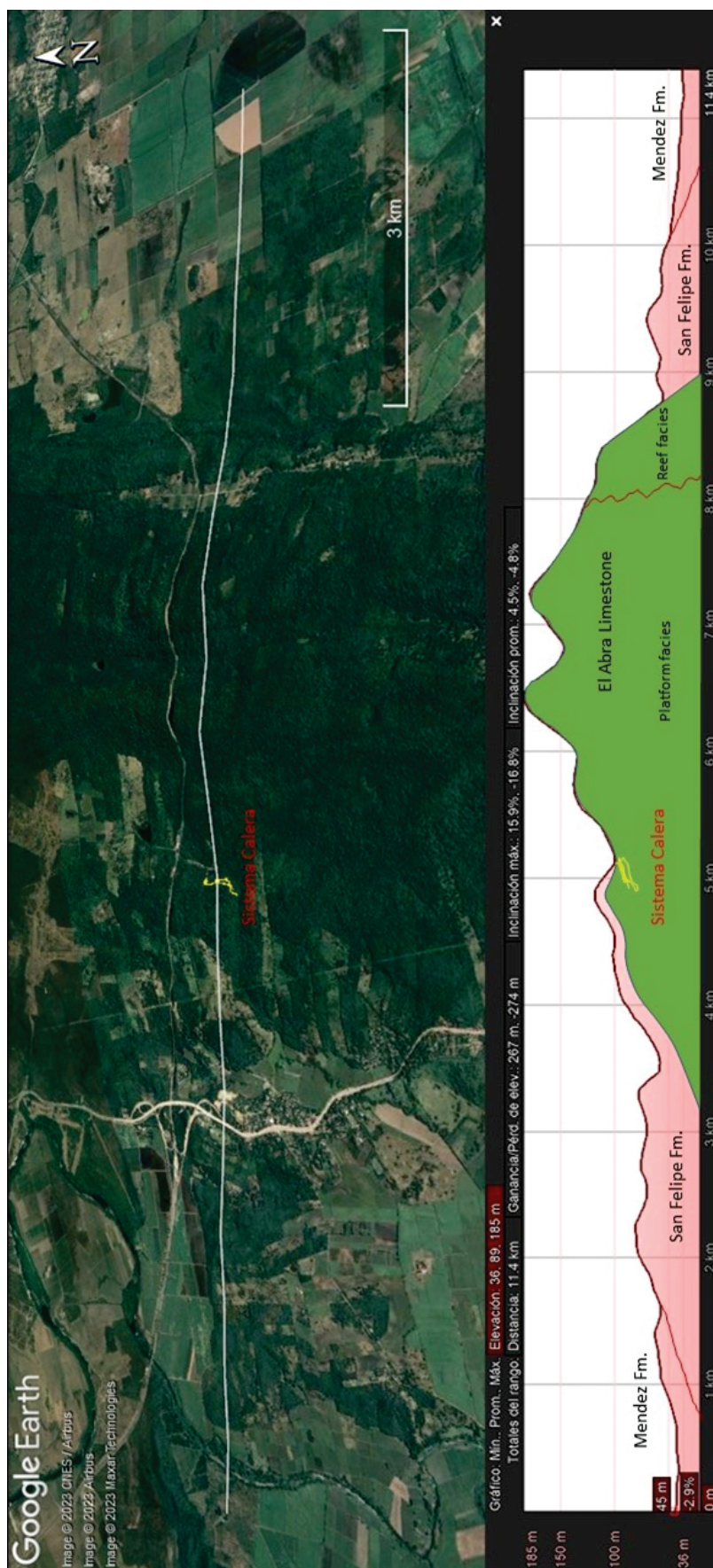




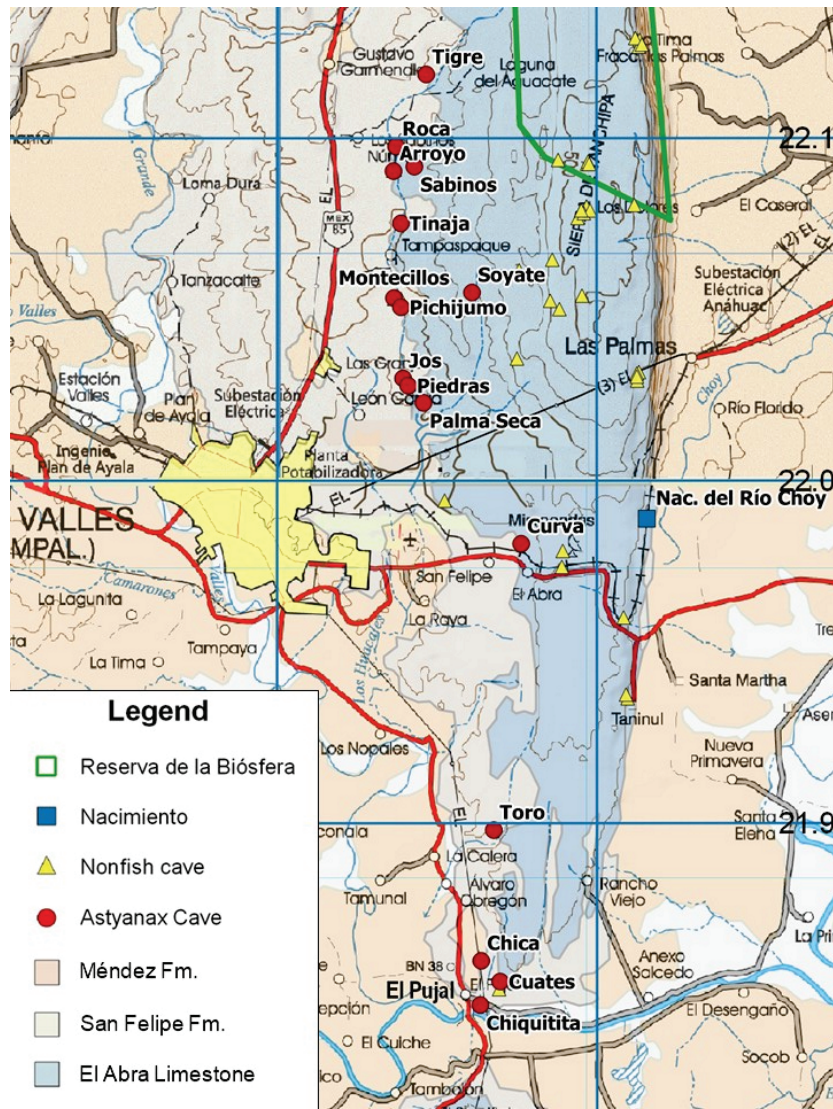
Supplementary Figure S1. Location map, showing with yellow triangles the previously known Pleistocene fossil sites nearest to the study area. The red triangle indicate the location of the Calera cave system, described herein.



Supplementary Figure S2. Various aspects of the lithologies in the area. a) *Toucasia* rudist bank, El Abra Fm. b) Laminated mudstones of El Abra limestone with stylolites. c and d) Two aspects of the shaly limestone of the San Felipe Fm. e) Contact between the San Felipe (above) and El Abra (below) formations on the road cut visible in Figure 4. Notice the slight angular discordance.



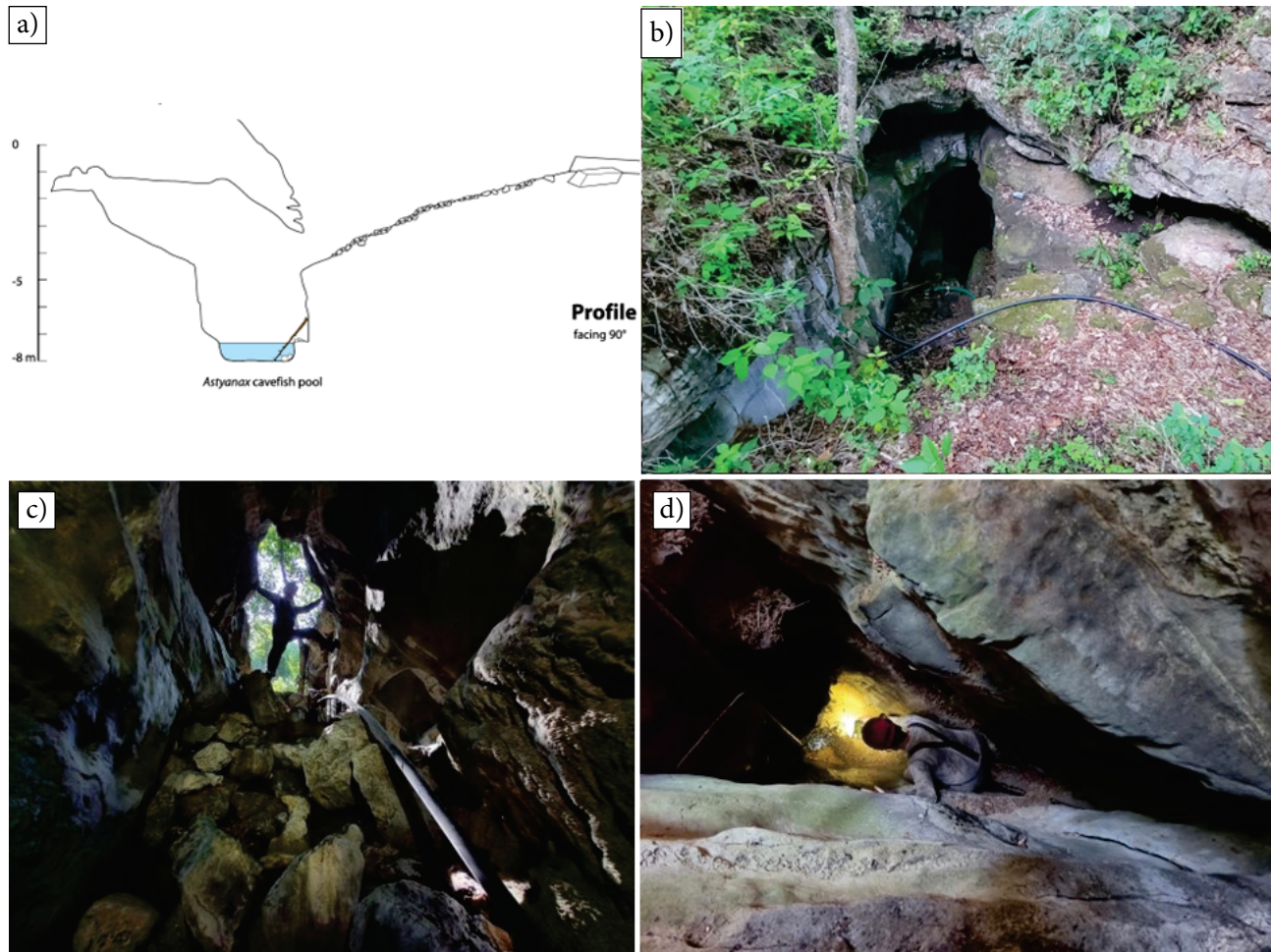
Supplementary Figure S3. Vertically exaggerated cross-section of the Sierra de El Abra to show the four small anticline ridges. The map of the Calera cave system is overlaid in yellow.



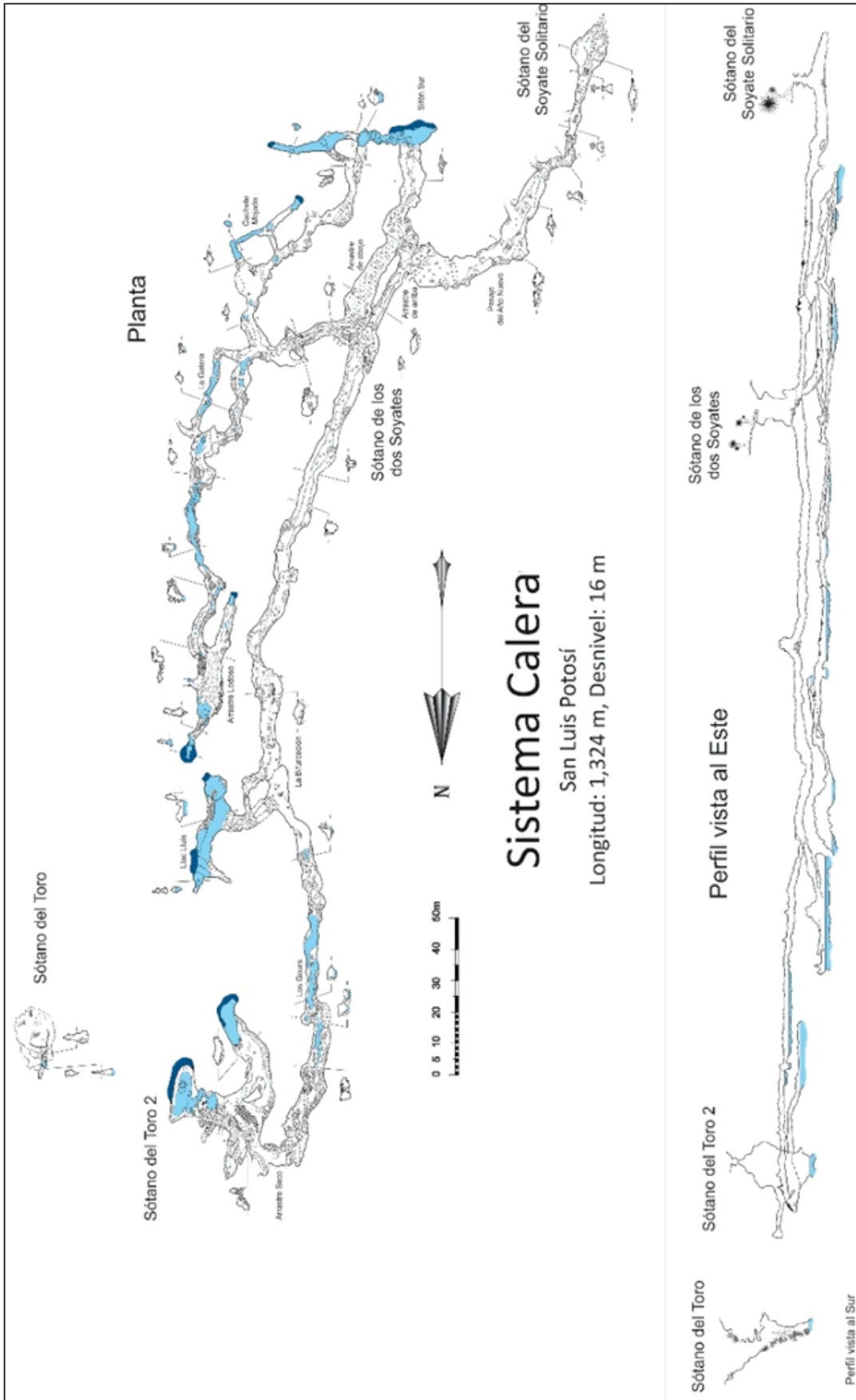
Supplementary Figure S4. Major caves of the central and southern Sierra de El Abra, modified from Elliot (2018). Toro is the main stream sink of Calera cave system.



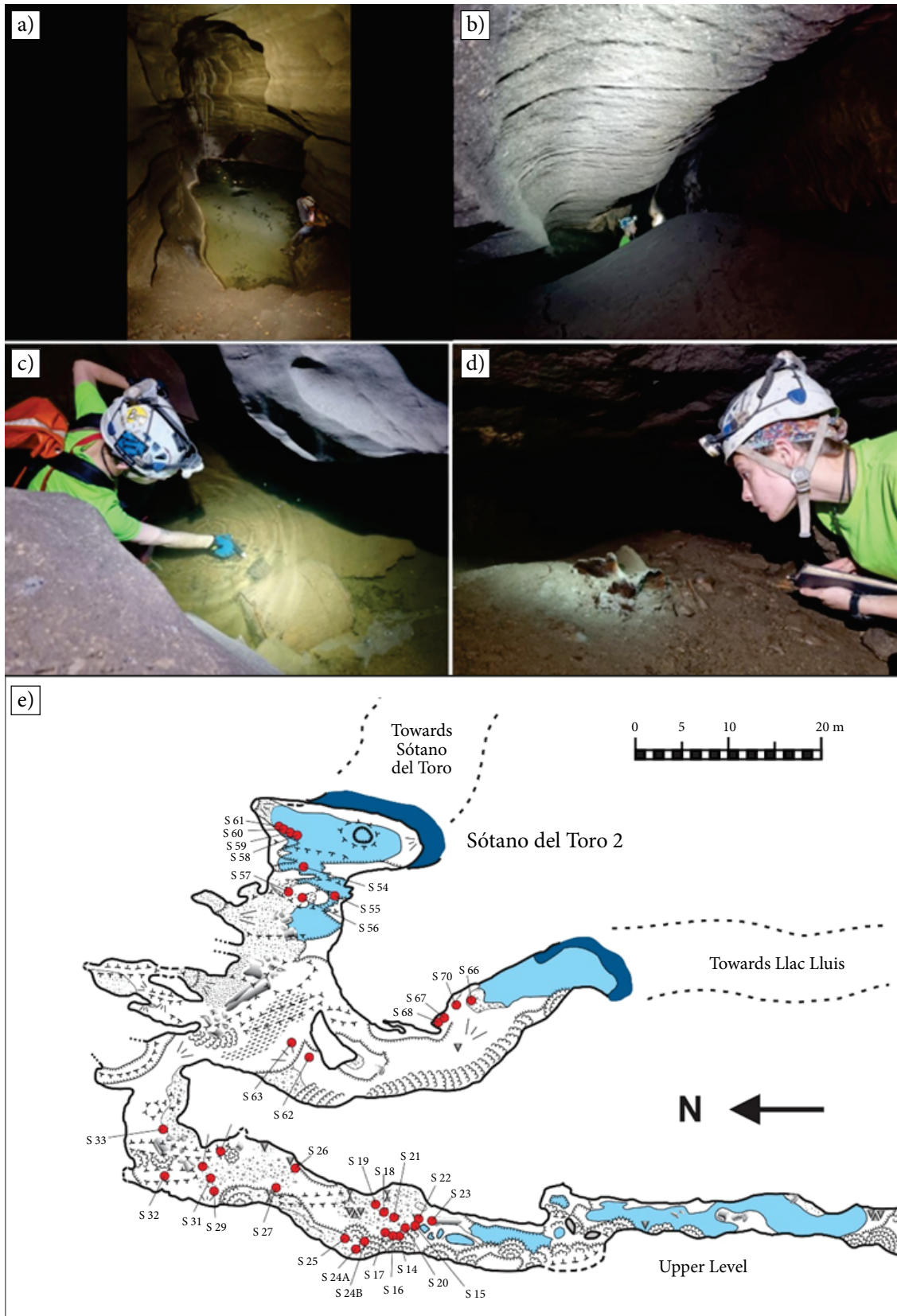
Supplementary Figure S5. Images of the entrances to the Calera system. a) Entrance of Sótano Dos Soyates. b) Entrance of Sótano del Toro 2. c) Entrance pitch of Sótano Dos Soyates. d) Tight entrance pitch of Sótano del Toro 2. e) Entrance pitch of Sótano Soyate Solitario.



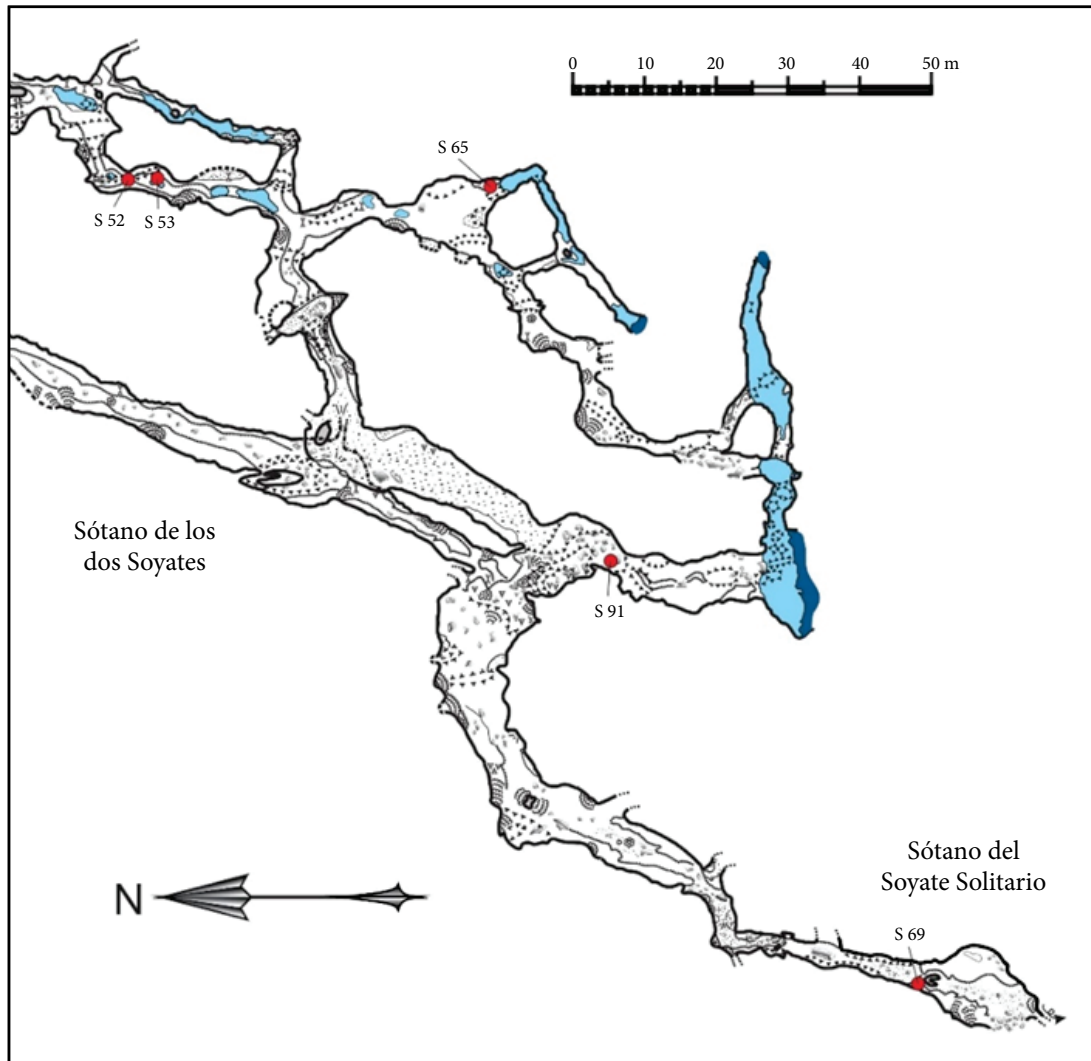
Supplementary Figure S6. Sótano del Toro. a) Map of the cave. Vertical augmentation by 2X. b) Entrance doline. c) Entrance from the pool at the bottom. Notice the steep drop. d) The pool at the bottom of the Sótano.



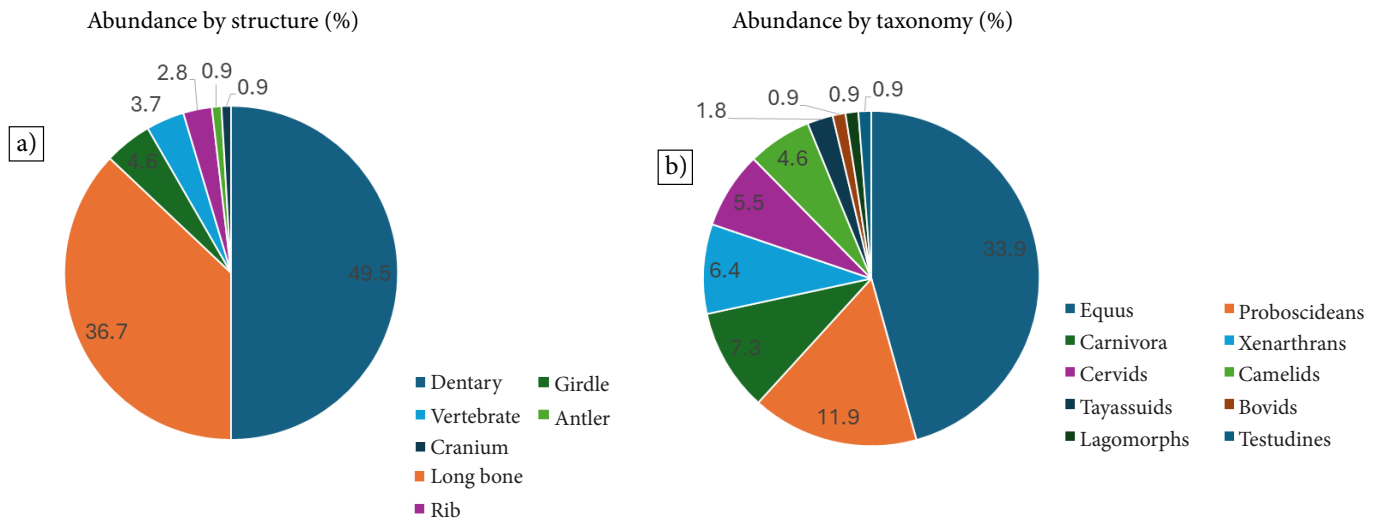
Supplementary Figure S7. Map of the Calera system and Sótano del Toro. Vertical augmentation by 2X.



Supplementary Figure S8. Sótano del Toro 2 entrance chamber. a) General view of the room. The pool is assumed to be a connecting sump with Sótano del Toro. b) Mud deposits at the top of the talus slope, 4 m above the main pool. c) A gomphothere (*Cuvieronius* sp.) molar in the main pool. d) Contemplating one of the large fossils in the crawl towards the downstream sump. e) Sketch of Toro 2 chamber and the northern portion of the upper level showing the location of the fossils (labeled red dots).



Supplementary Figure S9. Location of fossils on the southern sections of the cave.



Supplementary Figure S10. a) Abundance of the fossil based on the part of the body the bones belong to. a) Abundance of fossils based on the taxonomic group they belong to.